



General:

- Boat is built under RINA class
- Worldwide operations
- Having twin (Kort Nozzles)
- Twin rudders and comprehensive package of Diving & Surveying.

Registration:

Flag	Egypt	Year of Built	2014
Port of Registry	Alexandria	Builders	Wind Marine (Yard-k)
Owner. Seapro Petroleum & Marine Services		Call Sign	N/A
Class:	IRS (INTLREG)	IMO No.	N/A

MAIN PARTICULARS

Dimensions:

Length Overall	23.5 m.	Draft.....	2.2 m.
Breadth.....	6.16 m.	G.R.T	105 T.
Depth.....	3.13 m.	N.R.T	42 T.
		Dead Weight	80 Metric Tons

Capacities

Deck Area	80 M ² Main deck	Fresh water	22 T.
Deck Load.....	2T/M ²	Fuel oil.....	40 T.
Deck Cargo	30 T.	Lub.oil	700 Ltrs.
		Fuel oil daily Tank	5T.
		Chemical tank	(2)x 2T. each



Accommodation:

Cabin 2×Double Berth Cabins	Laundry (1)
..... (1×6) Berth Cabins	Galley (1)
Total Berth (10) Berths	Air conditioning Central Marine A/C
Mess (1)x(10) Seats	Freezer (6.0) Cu.mt.@-18°C
	Refrigerator (6.5) Cu.mt.@+5°C

Machinery & Performance

Machinery

Main Engines (2) x 400 Hp each
Main Generator (1) x 120 KVA
Auxiliary Generator (1) x 65 KVA
FiFi ½ 1200m3/H
Monitor2x600 m3/H

Speed:

Max 10.8 Kts.
Cruising 8.5 Kts.

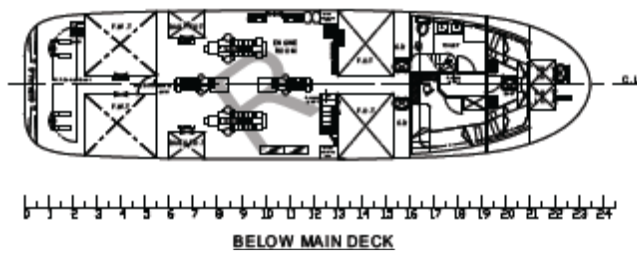
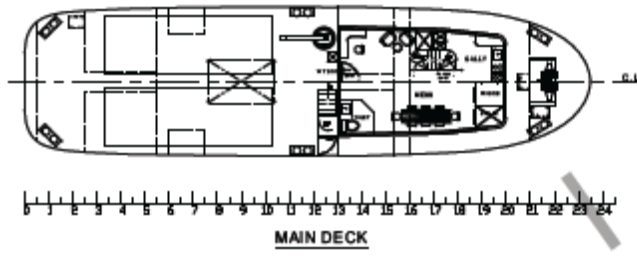
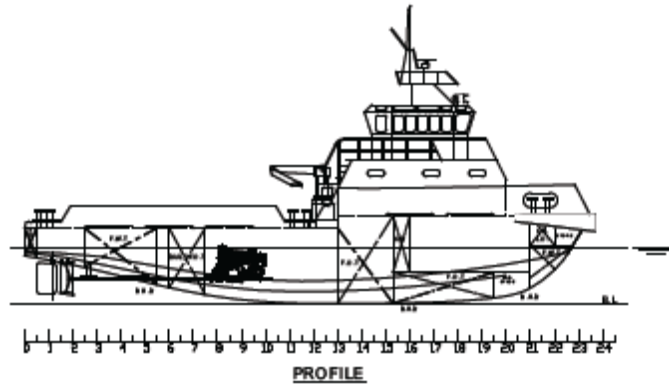
Equipment & Electronics

Navigation equipment:

Radar (1) FURUNO
GPS (1) FURUNO
Magnetic Compass (1) AUTO NAUTIC
Digital Compass (1) FLUX GATE
Echo Sounder (1) SAMYUNG
AIS (1) ICOM

Communication equipment:

VHF/DSC (1) SAMYUNG
VHF Portable..... (1) ICOM
GMDSS Radio (2) ICOM



Contact info:

<p>SEAPRO GROUP</p> <p>Behind EL-Nozha Airport 10th Village St. – Beside Modern American School – Smouha, Alexandria (Egypt)</p>	
<p>Tel: (+2) 3-3806818 - 016 5529924 - 0100 1473826 - 010 22208267</p>	
<p>Fax:(+2) 3-3806813</p>	
<p>E-mail:Info@seaproegypt.com</p>	<p>Website:www.seaproegypt.com</p>